

DIMENSION

From DWS

ISSUE # 2



P.02

DWS CELEBRATES 20 YEARS OF CONTINUOUS INNOVATION

We reflect on the past 20 years of development and growth as well as looking to the future for DWS and Oracle JDE E1.

P.03

DWS DELIVER SIGNIFICANT EFFICIENCIES FOR TYNDALE

Explore how our innovative portfolio has helped deliver up to 75% of functional testing time savings for Tyndale.

P.03

ORACLE ANNOUNCE JDE E1 TOOLS RELEASE 9.2.3

With another action-packed tools release now available for 9.2, we examine the latest features and enhancements adding value to your platform.

P.04

DOES WHERE YOU HOST YOUR JDE E1 MAKE A DIFFERENCE?

For many organizations, “the cloud” sits at the very heart of digital transformation, but is it inevitable? We explore the key considerations of hosting JDE E1.

CELEBRATING 20 YEARS OF CONTINUOUS INNOVATION

1998 was an exciting year for me and my fellow shareholders. That year we decided to start our own company. We were, perhaps, a little naïve but determined to be a serious company and make a difference. If you'd told me that we would still be trading 20 years later, having brought three major software products of our own to market, I would have laughed at you.

Over the years we have worked with hundreds of customers, representing many industry verticals, in more than 35 countries. We've also had staff from 22 different countries speaking a total of 18 different languages. We survived the dot com boom and bust and safely navigated the global financial crisis. We've seen the birth of countless IT initiatives, trends and three letter acronyms.

The latest releases of JD Edwards ERP have seen a move to the Digital ERP Platform, driven by the adoption of

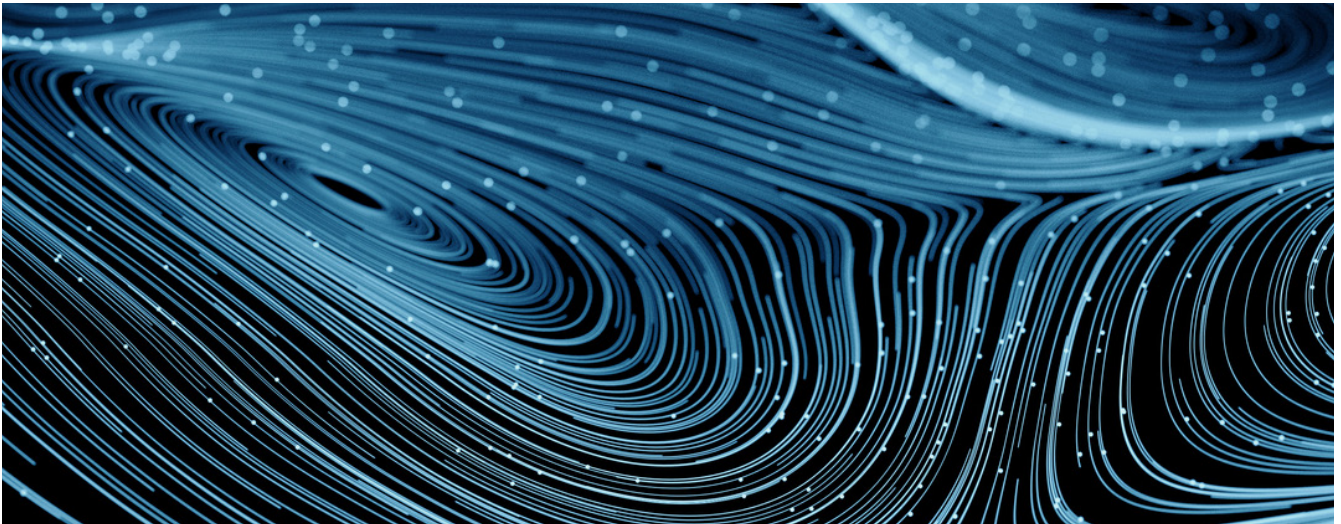
mobile, IOT, collaboration, orchestrator and cloud tools. We are already seeing robotic process automation and assisted decision-making being built into JDE, in what is otherwise known as 'Supervised ERP'. The next step is 'Intelligent ERP', sometimes referred to as 'Autonomous ERP'. This is where machine learning, adaptive intelligence and assisted or automated decision making are predicted to become more commonplace within ERP systems.

This level of change can only be delivered via the continuous delivery model, which customers can adopt once they make the move to the JD Edwards EnterpriseOne 9.2 release. This model is a game changer for JD Edwards customers as they will need to adopt a code-current strategy if they are to remain agile enough to embrace the latest and greatest that Oracle JD Edwards has to offer.

We see a future with JD Edwards AND Oracle Cloud Applications.

The JD Edwards product line is truly 21st century software, offering customers both choice and control. Our customers tell us that they love the strength and depth of the JD Edwards core functionality in combination with the innovative tools available to them in the newer releases. We can also see that the adoption of Oracle Cloud Applications will increase and that a lot of our customers will run both JD Edwards and specialist Oracle Cloud applications, side-by-side for years to come.

Our reason for being in business is to add value to our customers by delivering practical and reassuringly robust solutions that represent value for money. The one thing I have learnt in business is that to be successful, you must be a good listener. You must listen to your customers, employees and partners and pick out what is most important to them and then act on it.



“For any of our customers or partners reading this; I’d like to thank you for your support over the past 20 years. The future is incredibly exciting, and we look forward to continuing to serve you.”

Barry Burke, MD and Owner, DWS Global

UNLOCKING TEST AUTOMATION FOR TYNDALE

Founded in 1962 in Carol Stream Illinois, Tyndale House Publishers employs 250 people and publishes the NLT Bible, Christian fiction, non-fiction, children's books and other resources.

JDE E1 is fully integrated into Tyndale, with up to 70 concurrent users utilizing AP, AR, Inventory Management, Procurement, GL, Warehousing, Transportation and Expense Management and Sales Order Management modules.

With a small internal team of two dedicated to JDE support, testing could be time consuming. Rather than depending upon ordinary users to support quality assurance (QA), Tyndale was looking to automate as much of the process as possible. In anticipation of further systems development, and a potential upgrade to JD Edwards EnterpriseOne 9.2 (JDE E1 9.2), Tyndale needed to find a way

to reduce the burden of testing during any future change event project.

The solution

Karen Riner, Systems Administrator at Tyndale has been a member of the JDE community for 17 years and understood that test automation would play an important role in building the business case for an upgrade to 9.2 – something that would be essential if Tyndale was to maximize the return on its investment in JDE.

Tyndale underwent a process of due diligence in assessing a number of testing solutions, including Selenium, UPK, and OATS but found these required additional development or didn't work in the ways they required. Having assessed the alternatives, Tyndale implemented DWS Dimension Focus™ to support test planning and DWS Dimension SwiftTest™ for test automation.



TYNDALE

“The DWS product looked like a perfect fit from the start”.

Karen Riner, Systems Administrator, Tyndale

The result

Using Dimension Focus has resulted in better test planning and eliminated wasted effort on objects that don't need testing. The adoption of SwiftTest has had a significant impact on both continuity and productivity; saving Tyndale up to 75% on the time taken to execute complex functional testing. This has resulted in a futureproof, code-current foundation for the business to develop.



Tyndale's quill logo is a registered trademark of Tyndale House Publishers, Inc

ORACLE ANNOUNCES TOOLS RELEASE 9.2.3

Oracle recently announced the availability of the latest JD Edwards EnterpriseOne (E1) Tools Release 9.2 Update 3 (9.2.3). This is another action-packed release from the Oracle JD Edwards team, including new features and enhancements that will add significant value to any JD Edwards release 9.1, or 9.2, system.

Emphasis is placed on providing power users with simplified tools they can use to enhance and customise E1. This release includes more functionality to enable digital transformation and automation within the enterprise. With the new support for 64-bit applications, the ground work has

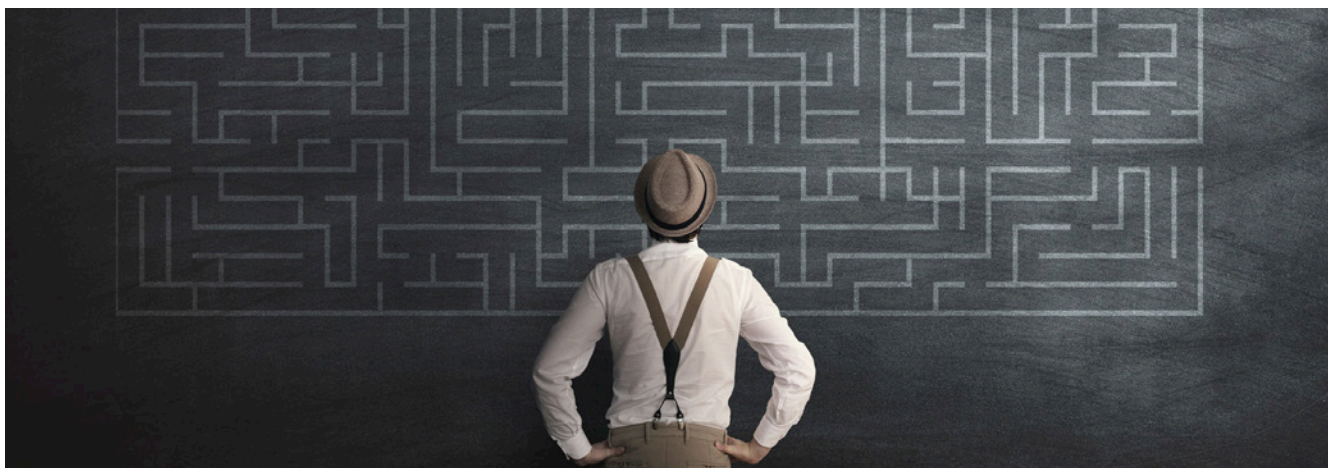
been laid for the withdrawal of support for 32-bit Java applications.

Highlights of the new tools release include:

- Orchestrator Enhancements
- UX One Foundation – User Defined Objects
- Server Manager support for Multi-Foundation
- Form Extensibility Enhancements
- Notification Message Center and My Worklist
- 64-bit Enablement
- Platform Certifications

We have installed Tools 9.2.3 onto our own test systems and investigated some of these features in more detail. Read the full article here: www.dws-global.com/jde-release-92-update-3/





IS IT ALL A MATTER OF WHERE YOU HOST?

For many organizations, “the cloud” sits at the very heart of digital transformation, but is it an inevitability? According to LogicMonitor’s Cloud Vision 2020 report, just 27% of enterprise workloads will remain on-premises by 2020. Within five years, the majority (53%) of respondents predicted the shift to cloud would be almost complete, with just 5% of workloads remaining on-premises.

For Oracle customers, the numbers are a little more sceptical. The Gartner Report “What Oracle ERP customers need to know about Oracle Cloud Applications” (published in March 2018) is based on the strategic assumption that 55% of Oracle’s on-premises ERP customers will have moved 80% of their workloads to the cloud by 2021.

The reality is, there are as many arguments for the cloud as there are against. For most organizations, the future will lie in a hybrid

infrastructure that features elements of on-premises, public and private cloud. Cloud migration is likely to be more of a phased transition and less a mass exodus.

This is a reality understood by Oracle. Despite rumours to the contrary, Oracle’s on-premises solutions are not going end-of-life. Most of the company’s revenues still come from sales and support of on-premises solutions and it continues to invest heavily in its non-cloud portfolio.

“So where does this leave JDE E1 users?” Oracle expects a significant proportion of customers to begin a migration to cloud applications at some point in the next five years, but the journey will be easier for some than others.

Agnostic JDE E1 Support

With the journey to the cloud likely to take some time, JDE E1 customers will find themselves utilizing a mix of cloud and on-premises applications. For

many, this may be the desired end-state, rather than a transitory position.

In this hybrid model, JDE E1 customers will need to have access to products and services that are deployment agnostic. By which I mean they should work equally well for customers who maintain on-premises solutions as those who adopt a cloud-first strategy.

The decision to move a workload to the cloud will be dependent upon several criteria, not least of which will be Oracle’s roadmap. With the adoption of a continuous delivery model for JDE E1 following release 9.2, the first step for most organizations should be to get code-current, then stay code-current. Once on the latest release, you will be able to access all the latest features and functionality and make better informed decisions about future deployments.

Find out more about our deployment agnostic solutions at: www.dws-global.com/what-we-do/products-overview

About DWS

Since 1998, we have been providing development and technical services to organizations looking to customize, integrate, extend, upgrade or support implementations of EnterpriseOne. We also sell EnterpriseOne testing products that leverage our deep domain expertise and help customers run smaller, faster and smarter projects.

DWS serves a global client base using proven methodologies and proprietary DWS Dimension™ tools. Our best-practice approach and eye for detail help us deliver products and services that save time and money and continually drive down your TCO for JD Edwards.

For further information please visit our website, or contact us:

UK: +44 (0) 1494 896 600 US: +1 888 769 3248 ANZ: +64 9427 9956
sales@dws-global.com www.dws-global.com

ORACLE

**Gold
Partner**
Cloud Standard