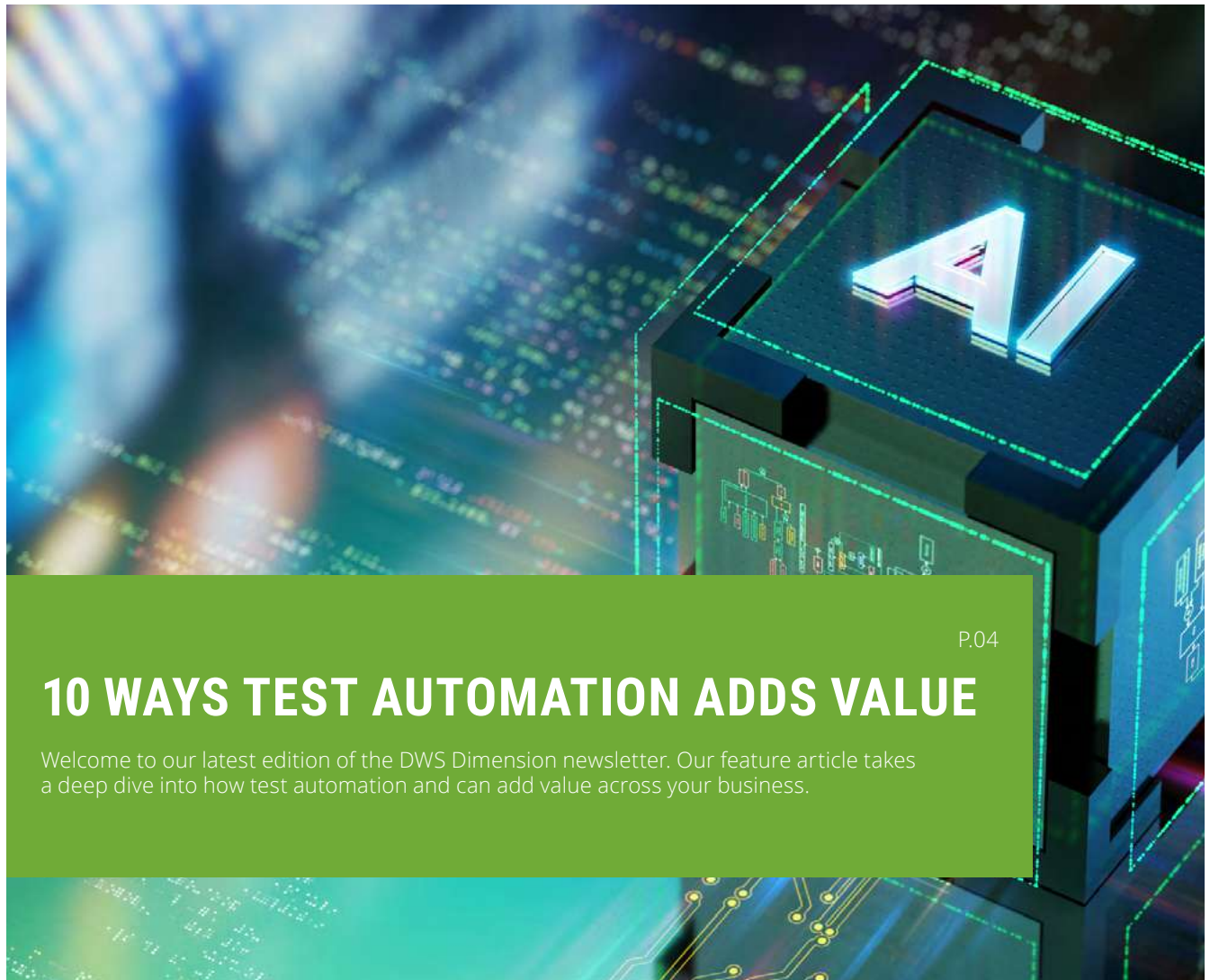


# DIMENSION

From DWS

ISSUE # 21



P.04

## 10 WAYS TEST AUTOMATION ADDS VALUE

Welcome to our latest edition of the DWS Dimension newsletter. Our feature article takes a deep dive into how test automation and can add value across your business.

P.02

### ORACLE'S REDWOOD UI: A GAME-CHANGER FOR HCM

Get ready to future-proof your business with a modern system that simplifies HR operations and prepares you for growth.

P.03

### SMALLER, FASTER, SMARTER: 3 REASONS TO UPGRADE

Reduce your modified footprint, accelerate time to value, and embrace continuous adoption with a code current strategy.

P.04

### HOW TO AUDIT AND ESTIMATE YOUR NEXT PROJECT

Dimension Analyze from DWS provides clarity of project scope and can help reduce your modified footprint by up to 75%.

P.05

### 10 WAYS TEST AUTOMATION ADDS VALUE TO YOUR BUSINESS

Still wondering how test automation could benefit your business? Here are 10 ways it adds value...

# ORACLE'S REDWOOD UI: A GAME-CHANGER FOR HCM



## We all want things to be easier.

Enterprise software has long been criticized for its outdated interfaces and frustrating workflows. It shouldn't be a stress to use tools that are designed to help. Oracle's Redwood UI is flipping the script, offering HCM users an intuitive, visually compelling experience designed to boost productivity and simplify tasks.

Oracle's Redwood UI is a powerful advancement for HCM users, offering an adaptable, intuitive interface that enhances daily operations and supports future growth. Beyond visual enhancements, Redwood's integration with modern tools and automation capabilities drives productivity and reduces manual workload.

Redwood's updated design and improved usability are clear from the start, but the switch to this new UI brings some additional benefits. Previous HCM interfaces didn't always work well with test automation tools, which made it harder for companies to automate testing for Oracle applications. Redwood's modern framework now works smoothly with tools like Dimension SwifTest, a popular choice for test automation.

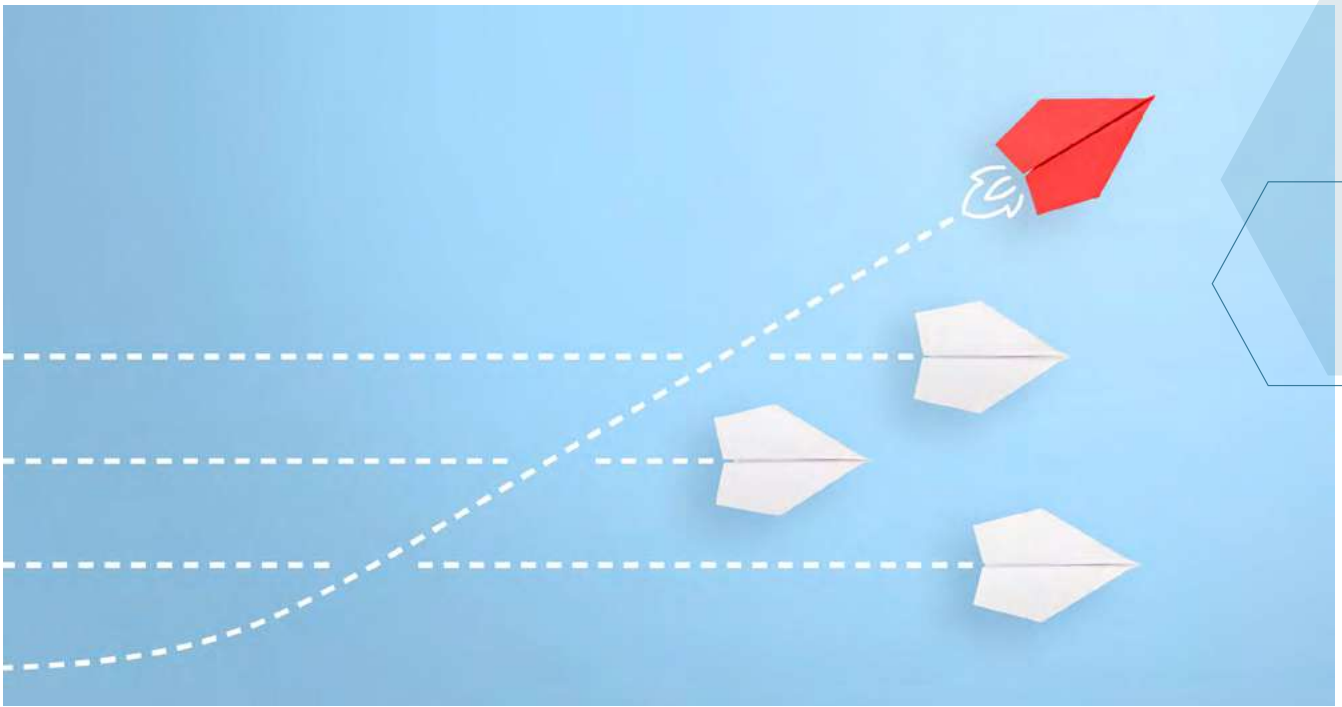
Oracle's introduction of Redwood is part of a larger initiative to modernize its platforms, recognizing user experience as a competitive differentiator. As businesses strive to adapt to the digital era, Redwood provides a modernized interface that supports a more intuitive and efficient workflow. This UI aims to deliver the simplicity of consumer software within the robust functionality of enterprise applications, setting a new benchmark for usability in HCM and beyond.

If you haven't yet explored Redwood, now is an ideal time to consider how it could streamline your HR processes and increase overall efficiency.

With Oracle's resources and expert support, transitioning to Redwood can be a smooth process that prepares your organization for the demands of tomorrow.

[Read the full article here.](#)

# SMALLER, FASTER, SMARTER: 3 REASONS TO UPGRADE



**T**hinking about upgrading your JDE E1? It's not just about staying code current; it's your ticket to process efficiency, accelerating time to value, and unlocking a whole new world of features and functionality.

There is always an element of risk associated with an ERP upgrade project, but with continuous adoption becoming the industry standard, the risks associated with falling behind a code current state may be even greater. Concerns over complexity and potential disruption can lead businesses into code debt, where they not only fail to realise the benefits of new functionality but also hold on to outdated or unused code that unnecessarily adds weight to their modified footprint.

Upgrades should not be viewed with trepidation, but rather as an opportunity to embrace new functionality, improve future process efficiency and make every subsequent project smaller, faster and smarter.

## Adopting a code current strategy

Code currency is the key to maximizing the return on your continued investment in JDE E1. Staying code current allows you to access new features, improve security, reduce technical debt and enhance the performance of your

## EnterpriseOne software.

Reducing your modified footprint Custom code can provide incredible value, but it also introduces complexity.

Over time, maintaining custom objects can become expensive and time-consuming, especially when the underlying software is evolving rapidly. Every upgrade project represents an opportunity to retire unused code, move closer to standard and reduce the time and effort required to retrofit.

Using DWS tools, businesses can turn each upgrade event into an opportunity to streamline future projects, reducing the time and cost associated with updates.

The result is a more standardised JD Edwards environment that is easier to maintain, with fewer customisations to manage and upgrade.

[Read the full article here.](#)



# HOW TO AUDIT AND ESTIMATE YOUR NEXT PROJECT



**D**imension Analyze is a software-led service that allows customers to audit and estimate their EnterpriseOne upgrades to a level of accuracy previously unseen. The service, using our proprietary tools, was first introduced in 2007 to JD Edwards EnterpriseOne customers and has now been used by 150+ customers worldwide. Today, it is the leading Audit & Scoping service in the JD Edwards marketplace.

**Dimension Analyze consists of three key services: Extract, Audit and Estimate**

## **Extract**

A complimentary service that provides a high-level view of your modified footprint, which you can cross-check against your own understanding of your E1 system. Based on the outcome, DWS provides a preliminary audit report and a fixed-price estimate.

## **Audit**

The Dimension Audit service profiles all modifications & extensions made to your EnterpriseOne system and identifies a list of objects for 'exclusion'. This exclusion list comprises those objects that the Audit suggests should not be taken up to the target release, along with a reason code.

## **Estimate**

A post-audit report includes a detailed, object-by-object estimate. Dimension Analyze is unique in the JDE marketplace. No other service can drill down to the level of detail and understanding of a customer's modified environment to produce such an accurate upgrade estimate.

## **How does it work?**

Dimension Analyze compares your production environment with a pristine environment and the target release to establish the most accurate understanding of your modified footprint. This enables a forensic level of analysis, down to a pixel movement level of detail, which unearths decommissioning opportunities across your JDE E1 instance.

## **Discover how DWS can**

**Simplify your upgrade journey here**

# 10 WAYS TEST AUTOMATION ADDS VALUE TO YOUR BUSINESS



**D**igital transformation is moving fast, and manual testing just can't keep up. Planning, running and documenting tests by hand eats up valuable time—time that could be better spent on innovation and big-picture priorities.

That's where test automation comes in. It's more reliable, giving you the tools to handle testing with ease while staying focused on what really matters. From speeding up testing cycles to improving accuracy and reducing human error, automation transforms how businesses approach quality assurance. It ensures systems are robust, secure and ready to perform, even under pressure.

## The case for automation

While manual testing has its merits, it is often labor-intensive, inconsistent and prone to oversight. Test automation, by contrast, delivers value across three core areas:

- 1. Consistency and reliability:** Automated scripts ensure that every test is executed to the same high standard, every time.
- 2. Improved accuracy:** Automation reduces the risk of human error, ensuring bugs are caught early before they impact users.
- 3. Efficiency and scalability:** Automated tests can be scheduled and executed rapidly, freeing up testers to focus on more complex scenarios.

## Unlocking the benefits of test automation

Still wondering how test automation could benefit your business? Here are 10 ways it adds value:

- 1. Accelerate testing cycles:** Automate repetitive tasks to complete testing faster, reducing project timelines and operational costs.
- 2. Repeatability and precision:** Automated scripts can be reused consistently, ensuring identical results every time.
- 3. Reduce tester fatigue:** Focus your team on designing smarter scripts for complex scenarios instead of monotonous manual tasks.
- 4. Schedule unattended tests:** Run regression tests or stress tests overnight and analyze results in the morning, saving valuable working hours.
- 5. Simplify data management:** Use "soft coding" to make global updates across multiple scripts, eliminating manual data re-entry.
- 6. Enhance system performance:** Simulate high-load scenarios to identify bugs triggered under pressure.
- 7. Streamline major change events:** Quickly adapt test scripts to new business data during large-scale projects, like onboarding new units.

**8. End-to-end process testing:** Link scripts for full business processes, such as "Procure-to-Pay" or "Order-to-Cash," to ensure workflows are seamless.

**9. Strengthen security testing:** Verify application access after every security update to ensure only the right users have access.

**10. Preserve business knowledge:** Enable subject matter experts to design scripts for non-technical users, retaining institutional knowledge and accelerating employee onboarding.

#### Why partner with DWS?

DWS specializes in helping businesses harness the power of test automation to optimize their systems. Our tools and expertise make automation accessible, efficient and impactful. Whether you're upgrading Oracle JD Edwards EnterpriseOne or managing complex change events, we'll guide you every step of the way.

#### With DWS, you can:

- Implement test automation tailored to your unique needs.
- Reduce costs, increase accuracy, and improve time-to-value.
- Leverage proprietary tools like Dimension SwifTest for smarter, faster testing.

## Ready to learn more?

Discover how test automation can revolutionize your business processes and reduce your total cost of ownership.

**Download our full eBook  
on Test Automation**

for an in-depth look at how automation is driving value in organizations like yours.



# BE AMONG THE FIRST TO EXPERIENCE DIMENSION SWIFTEST FOR SALESFORCE

DWS is excited to announce the beta-testing phase of Dimension SwiftTest for Salesforce (DS4SF)—the ultimate tool to streamline and automate your Salesforce testing processes.

We're seeking customers and partners to join us as beta testers and help shape the future of DS4SF.

## GET STARTED TODAY!

[Sign up now](#)

**Don't miss this opportunity to be at the forefront of innovation and enjoy exclusive perks.**

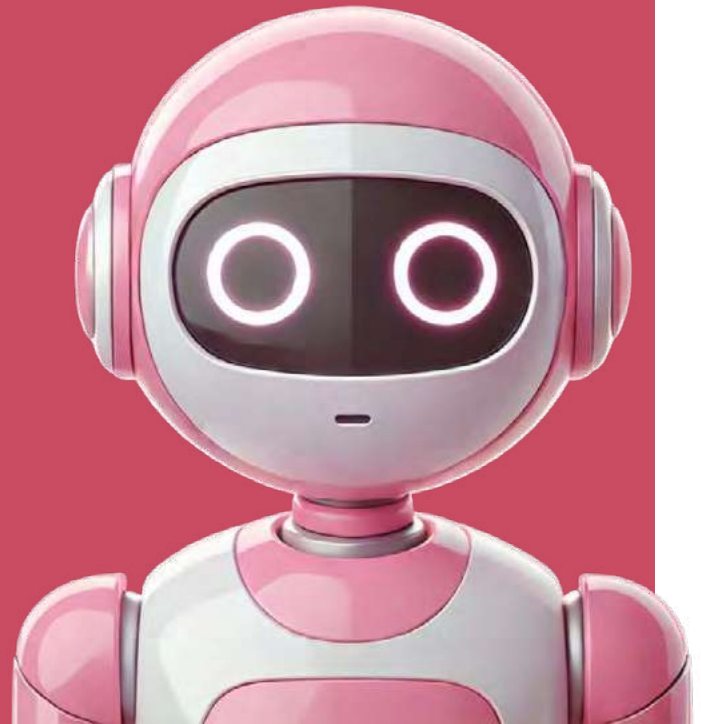
### Why Join the Beta Program?

Exclusive Incentives:

- **Free training for up to four individual beta users.**
- **Each beta user receives a US\$50 Amazon Gift Card as a thank-you for participating.**

Special Purchase Offer:

- **After beta testing, purchase at least five full licenses and get one license free! (Offer valid for 3 months post-General Availability release.)**



## About DWS

Since 1998, we have been providing development and technical services to organizations looking to customize, integrate, extend, upgrade or support implementations of JD Edwards Enterprise One and Oracle Fusion Cloud Apps. We also sell EnterpriseOne testing products that leverage our deep domain expertise and help customers run smaller, faster and smarter projects.

DWS serves a global client base using proven methodologies and proprietary DWS Dimension™ tools.

Our best-practice approach and eye for detail help us deliver products and services that save time and money and continually drive down your TCO for JD Edwards.

**For further information please visit our website, or contact us:**

UK: +44 (0) 1494 896 600    US: +1 888 769 3248    ANZ: +64 (0)21 023 67657  
[sales@dws-global.com](mailto:sales@dws-global.com)    [www.dws-global.com](http://www.dws-global.com)

**ORACLE**

**Gold  
Partner**  
Cloud Standard