

DIMENSION

From DWS

ISSUE # 22



P.05

THE FUTURE OF AUTOMATED TESTING

Welcome to our latest edition of the DWS Dimension newsletter.
Our feature article takes a look into the future of automated testing in 2025.

P.02

SMARTER SALESFORCE TESTING: 3 STEPS TO AUTOMATION

Salesforce keeps businesses moving—handling customer relationships, streamlining workflows and adapting to changing demands.

P.03

ENTERPRISE APPLICATION TESTING: SUCCESS STORIES

Enterprise applications enable operations, serve as a system of record and are a single source of the truth. Read more about our success stories here.

P.04

JD EDWARDS ENTERPRISEONE UPGRADE SERVICES

Customers upgrade for many reasons: to improve productivity, streamline business processes, take advantage of new functionality, introduce better mobility to the workforce and eliminate the risk that comes from relying upon an unsupported software release.

P.05

THE FUTURE OF AUTOMATED TESTING – A LOOK AHEAD TO 2025

Automation and artificial intelligence are changing how businesses approach challenges, including the complexities of software testing. Read what's on the horizon for 2025.

SMARTER SALESFORCE TESTING: 3 STEPS TO AUTOMATION



Salesforce is built for flexibility, but every update or customization carries an inherent risk. With its constant stream of updates and near-limitless potential for modifications, even a minor change can trigger unexpected issues—leading to costly downtime, corrupted data, and disrupted workflows.

In a platform that powers critical customer interactions and business processes, these problems can quickly snowball, affecting everything from day-to-day operations to long-term strategic goals.

The traditional approach of manual testing, while familiar, often falls short in keeping up with rapid developments. It's labor-intensive, prone to human error, and can leave gaps that allow issues to slip through. When your business depends on Salesforce, you simply can't afford to let a small oversight turn into a major setback.

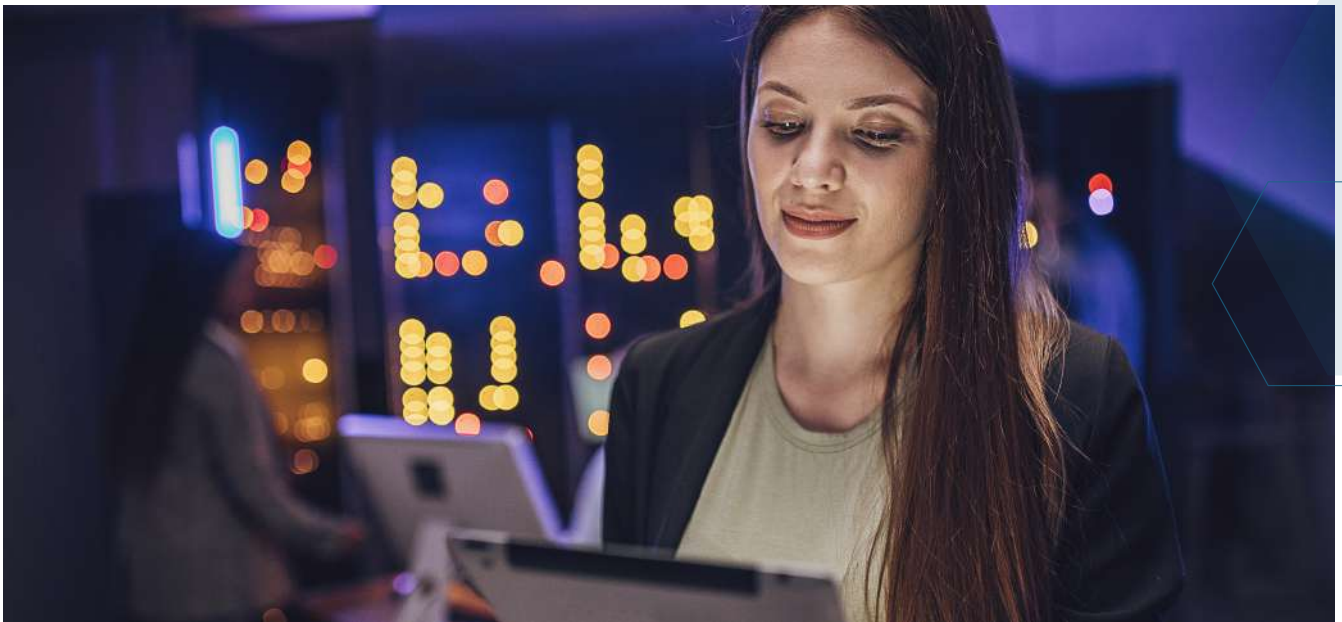
So how do you keep Salesforce running smoothly without getting buried in endless manual testing? The answer is automation. By shifting to automated testing, you can achieve consistent, reliable validation of every change, ensuring that your system remains robust and responsive. In our latest article, we break down the three key steps to smarter Salesforce testing—showing you how to move from reactive, error-prone methods to a proactive, efficient testing strategy that not only safeguards your system but also frees up valuable resources for innovation and growth.

If you're ready to reduce risk and improve efficiency, this guide will show you how.

- Assessing manual testing challenges – Why traditional testing methods slow teams down and increase risk.
- Exploring automation benefits – How automated testing speeds up releases, improves accuracy, and scales with your business.
- Choosing the right tool – What to look for in a Salesforce-specific testing platform to simplify and streamline your process.

[Read the full article here.](#)

ENTERPRISE APPLICATION TESTING: SUCCESS STORIES



Enterprise applications enable operations, serve as a system of record and are a single source of the truth. Read one of our stories now:

Brand/Sector:

- Commscope, telecoms.
- CommScope design and manufacture network infrastructure products.

Technology:

- TestArchitect.

Introduction:

We implemented TestArchitect to replace their onshore manual testing programs with an automated testing program that included offshore testing resources.

Project:

Commscope were manually testing core, back-end functionality of their networking software via a high-cost on-shore manual testing partner.

Commscope were also not testing the GUI component of their solution with the result that users were finding GUI bugs with every release.

Solution:

Commscope implemented an automated testing program that made use of:

Our off-shore testing resources in Vietnam and Japan.

TestArchitect – a toolset that integrates the latest methodologies and technologies in one easy to use package.

Outcome

- Implemented 4,000 automated software test cases for the GUI software.
- Expanded testing coverage from 0% to over 90%.
- Runs the entire automated test suite in only 20 machine hours
- Identifies bugs that were previously uncovered by the company's customers, thus helping to improve customer satisfaction.

[Read more success stories here.](#)

JD EDWARDS ENTERPRISEONE UPGRADES: WHY NOW?

Upgrading JD Edwards EnterpriseOne is more than just staying on the latest version—it's about improving efficiency, reducing risk, and unlocking new capabilities. Yet many organizations delay upgrades, fearing disruption, high costs, or uncertainty around the scope of their modifications.

But postponing an upgrade can have unintended consequences. The longer you wait, the more significant the changes become, increasing the effort and cost required when you finally make the move. With Oracle's Continuous Delivery model, keeping your system up to date is more critical than ever.

The Risks of Delaying

Upgrading JD Edwards EnterpriseOne is often seen as a major project—one that businesses may postpone due to concerns about cost, time, or potential disruptions. While delaying an upgrade might seem like the safer option in the short term, the reality is that waiting too long can introduce even greater challenges that ultimately make the upgrade process more complex, costly, and risky.

- **Increased Complexity** – The longer you wait, the wider the gap between your current version and the latest release. This means more features to catch up on, more configurations to reconcile, and a greater chance that your custom modifications will require significant rework. A smaller, incremental upgrade is far easier to manage than a large-scale leap across multiple versions.
- **Higher Costs** – Upgrading from an older, heavily modified version requires more time, expertise, and effort. The longer you delay, the more expensive the process becomes—not just in terms of upgrade costs, but also in potential productivity losses caused by an outdated system. Additionally, unsupported software can lead to costly compliance issues, security vulnerabilities, and inefficiencies that add up over time.
- **Business Disruption** – Running an outdated version of EnterpriseOne means you may miss out on crucial performance improvements, security patches, and new features that could enhance operations. Over time, the risks of system instability, integration issues, and compatibility problems increase. Without access to the latest tools and enhancements, businesses may struggle to keep up with competitors who have already modernized their ERP systems.

Beyond these risks, Oracle's move to a Continuous Delivery model means that keeping pace with updates is more important than ever. By upgrading to EnterpriseOne 9.2, businesses can stay code-current, benefit from ongoing innovations, and avoid the pitfalls of running an outdated system.

Proactive upgrades ensure your ERP remains a powerful, reliable tool that supports business growth rather than holding it back.

Why Upgrade to EnterpriseOne 9.2?

The latest release of JD Edwards EnterpriseOne delivers key enhancements designed to boost productivity and streamline operations. Upgrading can help businesses:

- **Improve system performance** – Benefit from a faster, more reliable ERP.
- **Enhance reporting & analytics** – Take advantage of new tools for better decision-making.
- **Enable greater mobility** – Empower employees with access to critical systems from anywhere.
- **Stay code-current** – Keep pace with Oracle's ongoing updates and innovations.

Our specialists bring real-world expertise and an objective perspective, helping organizations plan, execute, and optimize their upgrade projects efficiently.

Start Your Upgrade Journey Today

If you're considering an upgrade or code-current retrofit project, the best place to start is with a clear understanding of your modified footprint.

That's why we're offering a free initial Dimension Analyze audit—providing a high-level overview of your customizations to help you plan your next steps with confidence.

[Read the full article to learn more.](#)

THE FUTURE OF AUTOMATED TESTING – A LOOK AHEAD TO 2025



Automation and AI are transforming software testing, making it faster and more intuitive. At DWS, we're rolling out practical updates to Dimension SwiftTest that will enhance efficiency and user control. Here's what's coming in 2025.

Smarter Testing, Less Effort

Testing should enhance productivity, not slow it down. That's why new features in SwiftTest are designed to reduce manual effort and streamline workflows. Record & Capture will automatically log every test action performed within an ERP system, removing the need for time-consuming manual input. This ensures complete accuracy in test case creation, while also making it easier to replicate and validate test scenarios.

Auto-Action Creation takes efficiency a step further by allowing users to generate test actions simply by describing them in everyday language. Instead of navigating complex scripting tools, users can tell SwiftTest what they need—such as “enter ‘30’ in the Branch Plant field”—and the system will instantly create the corresponding test step. These enhancements make test automation more accessible to a wider range of users, reducing reliance on technical expertise while improving overall accuracy and speed.

Stronger Security & Compliance

Security and data protection remain top priorities, especially for industries with stringent regulatory requirements. To help organizations maintain greater control over their data, SwiftTest now offers Azure Data Center hosting options, enabling customers to store their testing data in a region that aligns with their compliance needs.

Additionally, the introduction of Single Sign-On (SSO) support for Microsoft Entra enhances security and simplifies access management. By integrating with multi-factor authentication, SSO provides an extra layer of protection while allowing users to log in seamlessly using their existing credentials. These enhancements ensure that organizations can implement test automation with confidence, knowing their data remains secure and accessible only to authorized users.

Adapting to ERP Changes

ERP environments are constantly evolving, but every update has the potential to break existing test scripts. SwiftTest's Self-Healing feature minimizes this disruption by automatically adjusting test scripts to accommodate common changes in the system. This reduces the manual effort required to fix scripts after updates, ensuring that automated tests continue running smoothly with minimal intervention.

As test libraries grow, finding specific test scripts or execution histories can become increasingly difficult. The new DS Search tool provides a fast and intuitive way to locate test cases, scenarios, or previous test results. This functionality improves efficiency by making it easier for teams to retrieve relevant tests when needed, reducing time spent searching through extensive libraries.

Expanding Test Coverage

Enterprise testing often extends beyond a single system, requiring validation across multiple applications and platforms. To address this need, SwiftTest is enhancing its ability to integrate with external testing tools, such as Agest's TestArchitect. These improvements allow organizations to run automated tests across a broader range of systems, including mobile applications, backend databases, and third-party integrations.

For UI-driven testing, Visual Comparison Testing will automatically detect layout or interface changes between test runs. This feature ensures that even subtle design modifications are identified, helping teams maintain a consistent user experience and reducing the risk of unintended UI regressions.

More Flexibility & Control

Organizations need the flexibility to tailor test automation workflows to their specific needs. The new Export/Import functionality allows users to edit test scripts offline before uploading them back into SwiftTest, making it easier to modify and manage test cases in bulk. Meanwhile, Dimension Hub updates will give administrators greater control over user and subscription management. These enhancements make it easier to manage access permissions, track usage, and optimize resources—ensuring that teams can scale their test automation efforts efficiently while maintaining oversight of system-wide activities.

What's Next?

Our goal is to make automated testing more efficient and adaptable. These updates are just the beginning—stay tuned for more enhancements in 2025!

[Read the full article here.](#)

TEST AUTOMATION MADE SIMPLE WITH SWIFTEST™ FOR SALESFORCE

**Sign up for your free 30 day trial
and start your journey to smarter
Salesforce testing today!**

**Swifttest for Salesforce: the application-aware
test automation solution that anyone can use!**

- Kick start your automation by rapidly building your catalog of test scripts and scenarios.
- Save up to 70% on the time spent on script building and a further 60% on test execution.
- Significantly reduce the burden of your typical 90-day patching cycle.

**Request a demo, or start
your free trial today!**



About DWS

Since 1998, we have been providing development and technical services to organizations looking to customize, integrate, extend, upgrade or support implementations of JD Edwards Enterprise One and Oracle Fusion Cloud Apps. We also sell EnterpriseOne testing products that leverage our deep domain expertise and help customers run smaller, faster and smarter projects.

DWS serves a global client base using proven methodologies and proprietary DWS Dimension™ tools.

Our best-practice approach and eye for detail help us deliver products and services that save time and money and continually drive down your TCO for JD Edwards.

For further information please visit our website, or contact us:

UK: +44 (0) 1494 896 600 US: +1 888 769 3248 ANZ: +64 (0)21 023 67657
sales@dws-global.com www.dws-global.com

ORACLE

Partner